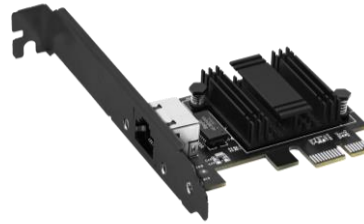


CY-S25GPCIE

PCIe Single RJ45 Port 2.5G**Network Adapter**

CY-S25GPCIE



- Supports 1 2.5G/1G/100M/10Mbps adaptive RJ45 Port, and full/half-duplex auto-negotiation.
- A new generation of PCI Express (PCIe) bus connector for more efficient data transfer.
- Supports Windows 7/8/10, Windows Server, Linux and other major operating systems.
- Supports Wake On LAN function.
- Compliant with IEEE 802.3i, IEEE 802.3u, IEEE 802.3ab, IEEE 802.3bz, IEEE 802.3x standards.

Product Overview ▼**2.5Gbps Speed**

The CY-S25GPCIE supports 10M/100M/1000M/2.5G speed, and full/half-duplex auto-adaptation, which is ideal for realizing 2.5G network to the desktop and improving network performance.

PCIe Interface

The CY-S25GPCIE supports the new generation PCI Express (PCIe) bus interface for more efficient data transfer and smaller footprint.

Good Compatibility

The CY-S25GPCIE is compatible with a wide range of operating systems, including Windows 7, 8, 8.1, 10 32/64-bit systems, Windows Server 2008 R2, 2012, 2012 R2, 2016 systems, and Linux systems, and corresponding drivers are provided.

Easy to Use

The CY-S25GPCIE is easy to use by plugging it into the corresponding PCIe slot and installing the appropriate driver.

The port supports auto-rotation and can be directly connected to other network devices for easy connection to the target network.

Product Specification ▼

Interface	- 1 2.5G/1G/100M/10Mbps Adaptive RJ45 port (supports auto flip)
Protocol Standard	IEEE 802.3i IEEE 802.3u IEEE 802.3ab IEEE802.3bz IEEE 802.3x
LED	10/100M rate indicator, 1G rate indicator, 2.5G rate indicator.
Product Size	-120mm*87mm*14mm (With long bracket) - 80mm*87mm*14mm (With short bracket)
Software Features	- Data rate auto-detection, Wake-On-LAN (Wake-on-LAN) function - Compatible with Windows 7, 8, 8.1, 10 32/64 bit systems, Windows Server 2008 R2, 2012, 2012 R2, 2016 systems, Linux systems, etc.
User Environment	- Working Temperature: 0°C ~ 45°C - Storage Temperature: -40°C ~ 70°C - Working Humidity: 10% ~ 90%RH Non-condensing - Storage Humidity: 5% ~ 90%RH Non-condensing