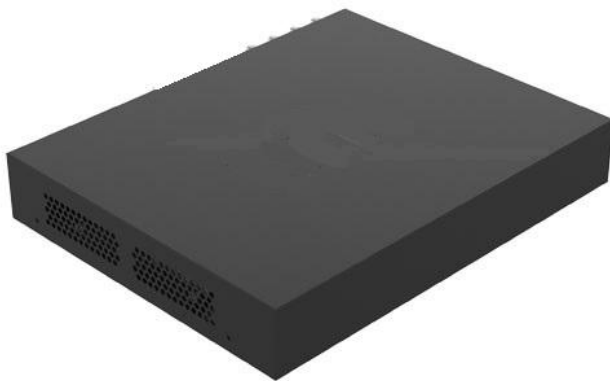


# Digital Video Recorder Ultra Motion Detection

CY-XVR6104-I 4 Channels

CY-XVR6108-I 8 Channels



*The focus on what really matters*



*Avoid false alarms*

## Features

- Support H.265/H.264 video formatsSupport audio over coaxial cable (only for TVI cameras)VISupport analog camera upgrade over coaxial cable
- Support TVI, AHD, CVI, CVBS, IP cameras with adaptive access
- 4/8/16-channel BNC input
- Support 1-ch HDMI output, 1-ch VGA output at up to 1920\*1080
- HDMI and VGA simultaneous output
- Long transmission distance over coaxial cable
- Support mainstream cameras of ONVIF and RTSP protocols
- Ultra motion detection function. It only captures the movement of people and vehicles, ignoring the movement caused by rain, animals and falling leaves.

## Specifications

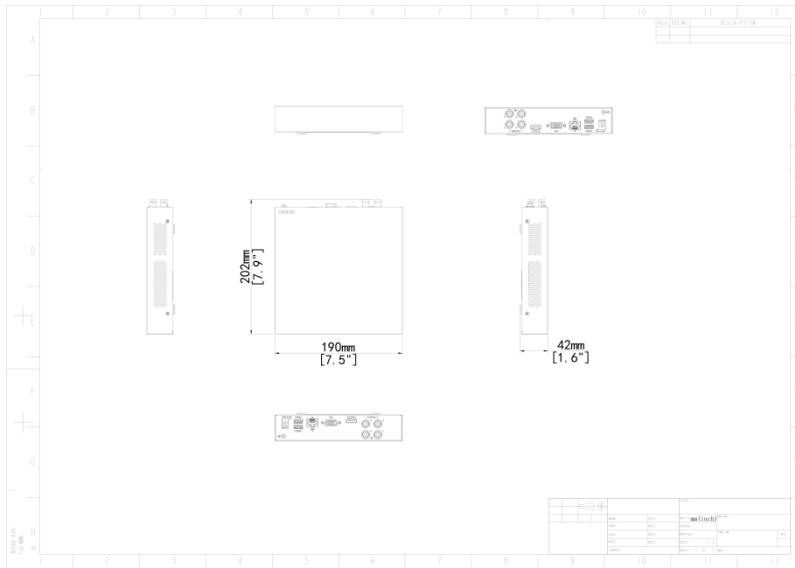
Video/Audio Input	Description
IP Video Input	2-ch
Analog Video Input	CY-XVR6104-I: 4-ch, BNC CY-XVR6108-I: 8-ch, BNC

Max IP Video Input	CY-XVR6104-I:6-ch CY-XVR6108-I:10-ch
Supported Analog Camera Types	Support AHD input:1080P@30fps720P@30fps  Support TVI input:1080P@30fps720P@30fps  Support CVI input:1080P@30fps720P@30fps  Support CVBS input
<b>Video/Audio Output</b>	<b>Description</b>
HDMI Output	HDMI:1920x1080/60Hz,1920x1080/50Hz,1600x1200/60Hz, 1280x1024/60Hz, 1280x720/60Hz, 1024x768/60Hz
VGA Output	CY-XVR6104-I: VGA:1920x1080/60Hz, 1920x1080/50Hz, 1600x1200/60Hz, 1280x1024/60Hz, 1280x720/60Hz, 1024x768/60Hz CY-XVR6108-I: VGA:1920x1080p/60Hz, 1920x1080p/50Hz, 1600x1200/60Hz, 1280x1024/60Hz, 1280x720/60Hz, 1024x768/60Hz
Live View Display	CY-XVR6104-I: HDMI/VGA: 1/4/6/8/9CY-XVR6108-I: HDMI/VGA: 1/4/6/8/9/16
<b>Encoding/Decoding</b>	<b>Description</b>
Recording Resolution	1080P Lite/720P/D1
Recording Frame Rate	CY-XVR6104-I: Main stream: 1080P Lite@25fps Sub stream: D1@25fpsMainstream: 720P@30fps Sub stream: D1@30fps  CY-XVR6108-I: Main stream: 1080P Lite@15fps Sub stream: D1@12fpsMainstream: 720P@15fps Sub stream: D1@15fps
Audio Sample Rate	8KHz, 16 bit per channel
Audio Bit Rate	64Kbps per channel
Decoding Capability	CY-XVR6104-I:Analog:4 x 1080P Lite@25, 4 x720P@30IP: 1 x 6MP@20, 2 x 1080P@30

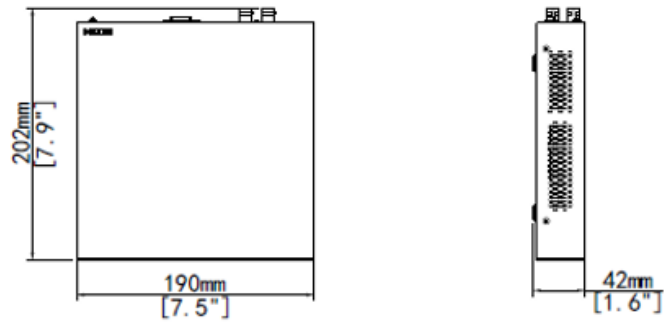
	CY-XVR6108-I: Analog:8x 1080P Lite @15, 8x 720P @15IP: 1 x6MP@20,2 x 1080P@30
<b>Two-way Audio</b>	Description
Two-way Audio	N/A
<b>Analog Snapshot</b>	Description
FTP/Schedule/Event Snapshot	<p>CY-XVR6104-I: FTP/Event snapshot:4-ch snapshot, up to 704*576resolution,Schedulesnapshot:not supported</p> <p>CY-XVR6108-I: FTP/Event snapshot:8-ch snapshot, up to 704*576resolution,Schedulesnapshot:not supported</p>
<b>Network</b>	Description
Incoming Bandwidth	<p>CY-XVR6104-I: 24Mbps (Up to 32Mbps after all analog channel conversion)</p> <p>CY-XVR6108-I: 24Mbps (Up to 40Mbps after all analog channel conversion)</p>
Outgoing Bandwidth	<p>CY-XVR6104-I: 48Mbps</p> <p>CY-XVR6108-I: 64Mbps</p>
Remote Users	128
Protocols	TCP/IP; P2P; UPnP; NTP; DHCP; HTTP; HTTPS; DNS; DDNS; SMTP
Browser(Plugin)	<p>IE(IE10/11)</p> <p>Firefox (version 52.0 and above)</p> <p>Chrome(version 45 and above)</p> <p>Edge(version 79 and above)</p>
<b>Smart</b>	Description
Analog Smart by XVR	CY-XVR6104/08-I: Ultra Motion Detection(UMD)
VCA Search	Behavior Search
Smart Functions by XVR	<p>CY-XVR6104-I: 4-ch(UMD)</p> <p>CY-XVR6108-I: 8-ch(UMD)</p>
<b>Alarm</b>	Description
General Alarm	Motion

Alert Alarm	IP Conflict; Network Disconnected; Disk offline; Disk Abnormal; Illegal Access; Hard Disk Space Low; Hard Disk Full; Recording/Snapshot Abnormal
GUI Language	Description
GUI Language	20 languages: English, Vietnamese, Thai, Turkish, Spanish (Latin America), Portuguese (Brazil), Spanish, Portuguese, French, German, Italian, Dutch, Polish, Czech, Hungarian, Slovak, Russian, Hebrew, Arabic, Ukrainian
Hard Disk	Description
SATA	1 SATA interface
Capacity	Up to 6TB for each HDD
External Interface	Description
Network Interface	1 RJ45 10M/100M self-adaptive Ethernet Interface
USB	Rear panel: 2 x USB2.0
Power Supply	DC 12V/1.5A
Working Environment	Description
Working Temperature	-10 °C ~ 55 °C (14 °F ~ 131 °F )
Working Humidity	≤ 90% RH(non-condensing)
Power Consumption (without HDD)	≤ 10W
Dimensions	Description
Weight (without HDD)	CY-XVR6104/08-I: ≤0.6 Kg ( 1.32lb )
Dimensions	CY-XVR6104-I: 190mm × 202mm × 42mm (7.5" × 7.9" × 1.6")
Certification	Description
Certification	CE, FCC, UL, RoHS, WEEE
CE	EN 55032, EN 61000-3-3, EN IEC 61000-3-2, EN 55035
FCC	Part15 Subpart B

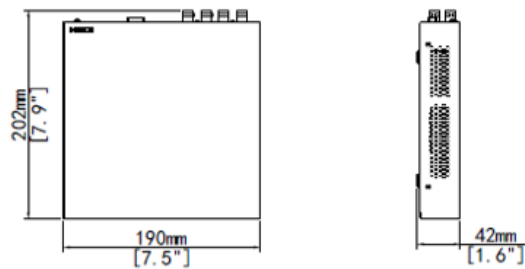
Dimensions



CY-XVR6104-I

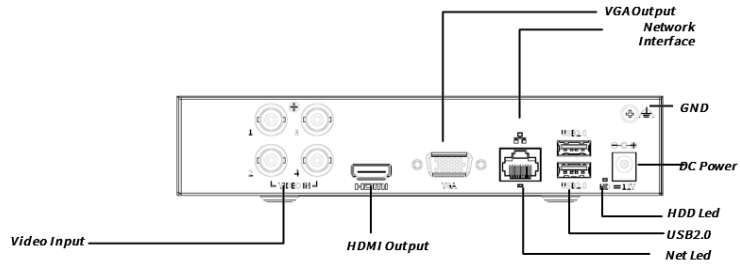


CY-XVR6108-I



## Rear Panel

CY-XVR6104-I



CY-XVR6108-I

