



DATASHEET **EL-280**



Electromagnetic Lock

User Manual

EL-280

Read the manual before usage and keep for future reference.

CE FC RoHS

1. Application Range

1. Door Types: Wooden door, Glass door, Metal door, Fireproof door.
2. Control Mode: Building intercom system, Access control system.

2. Note

1. Using powerful power supply, output voltage should be $DC12V \pm 10\%$, cable $>0.75mm$.
2. Don't hurt the galvanization layer during the installation.
3. Ensure the mounting plate well attach to the lock body.
4. The rubber ring must be added between armature plate and door leaf, don't fasten the screw tightly, keep the rubber ring elastic.
5. Don't welded the mounting plate to the door, or will effect the lock.
6. Clean the slushing oil with cloth, don't use alkaline or pungent cleaner.

3. Wiring of Lock

1. 12V-DC input:

Positive pole of 12V-DC connect to the terminal marked with "+"
Negative pole of 12V-DC connect to the terminal marked with "-"
Ensure the Voltage Selector is switched to 12V-DC.

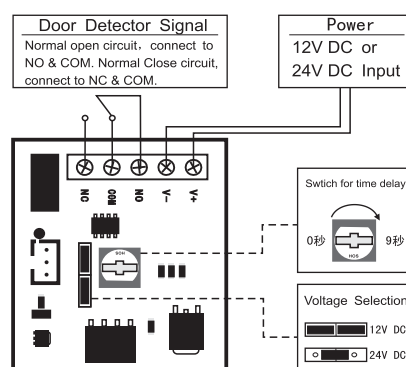
2. 24V-DC input:

Positive pole of 24V-DC connect to the terminal marked with "+"
Negative pole of 24V-DC connect to the terminal marked with "-"
Ensure the Voltage Selector is switched to 24V-DC.

3. Wiring of Door-State Detector

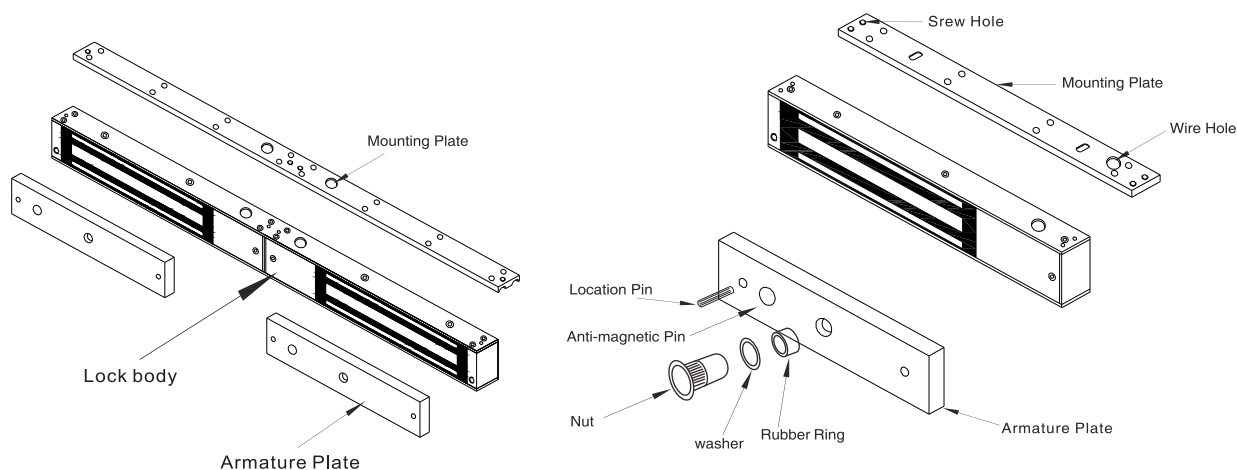
The overload current of relay contact is 1amp. when the input is 24V-DC, overload is strictly prohibited. Connect the normal-open circuit to the COM and NC for getting switch-over signal. But connect the normal-close circuit to the COM and NO for getting switch-over signal.

Note: Please use the 12V-DC input if the lock has not special annotate.
The overload voltage will damage the lock.



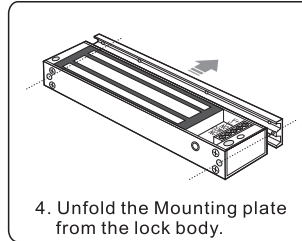
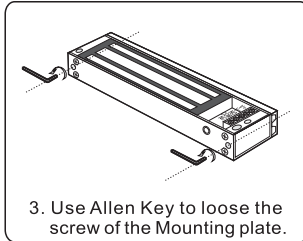
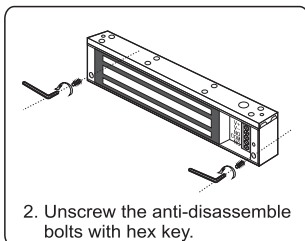
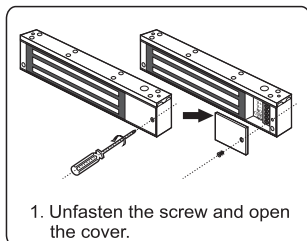
Connection Diagram

4. Main Components Diagram

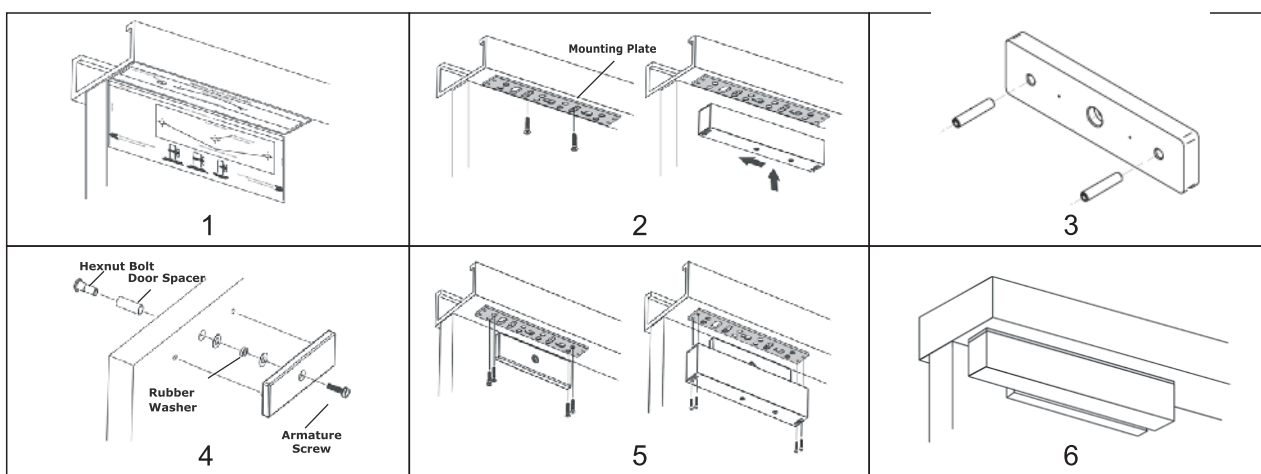


5. Disassemble Procedure

Disassemble the cover and band before installing the lock.

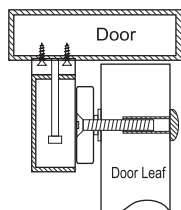


6. Standard Mounting Method

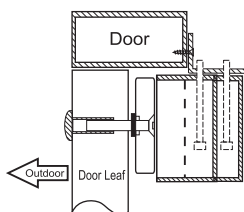


7. Bracket Mounting Method

When the door width is less than 42mm the width is not enough for Armature Plate of the magnetic lock installed, it need to add the additional L type bracket.



For in-swing door, install the lock body inside and then need to install the ZL bracket at the same time.



Magnetic locks installed in glass doors require extra U bracket (for 10-15mm glass door thick).

